



120W (1/6 HP)

REVERSIBLE MOTORS Frame size 90mm sq. (3.54 in. sq.)

Single-Phase

LEAD WIRE TYPE

SPECIFICATIONS

CONTINUOUS DUTY, INSULATION CLASS A or E, 4POLES

Model	Output		Voltage (V)	Frequency (Hz)	Rated						Starting Torque			Capacitor (μ F)
	(HP)	(W)			Input (W)	Current (A)	Torque			Speed (rpm)	(kg-cm)	(N-m)	(oz-in)	
							(kg-cm)	(N-m)	(oz-in)					
L9R120□C	1/6	120	1 \varnothing 100	50	280	2.5	9.4	0.921	130.54	1250	7.5	0.735	104.15	40
L9R120□D	1/6	120	1 \varnothing 200	50	280	1.20	9.4	0.921	130.54	1250	7.5	0.735	104.15	10
L9R120□B	1/6	120	1 \varnothing 220	60	280	1.25	7.6	0.745	105.54	1550	8.5	0.833	118.04	9
L9R120□E	1/6	120	1 \varnothing 115	60	280	2.6	7.4	0.725	102.76	1600	7	0.686	97.21	30
L9R120□X	1/6	120	1 \varnothing 220~240	50	280	1.15	9.4	0.921	130.54	1250	8.3	0.813	115.26	9

* Model in grey screen represents the motors with THERMALLY PROTECTED according to UL regulation.

* Model in dark grey screen represents the motors with THERMALLY PROTECTED according to CE regulation.

* In case of some models certificated for export, the special cord like CE or UL is added after the existing model no. ex) L9I60□XH-CE, L9I60□EH-UL.

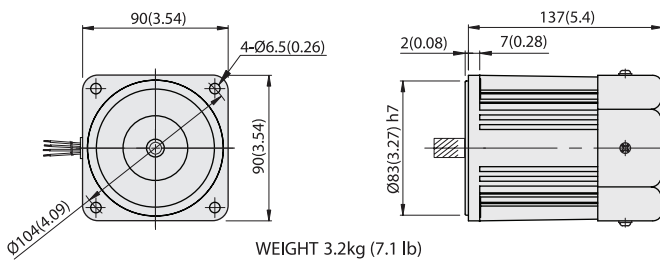
* Insulation class for motors which acquired certificates for export is B.

REVERSIBLE MOTORS

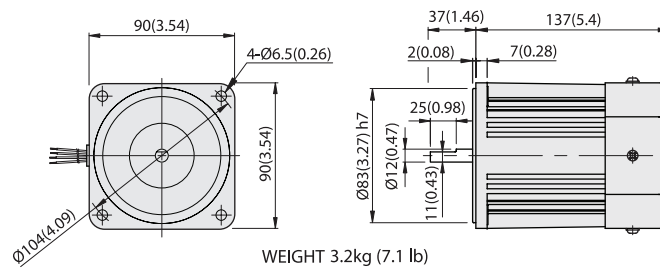
DIMENSIONS

L9R120P□H

Unit : mm(inch)

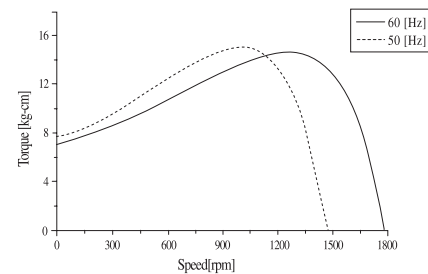


L9R120D□



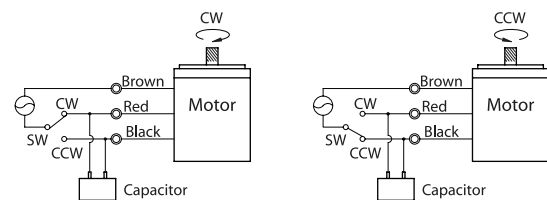
SPEED-TORQUE CURVE

Single phase L9R120□□



CONNECTION DIAGRAMS

Standard or with T.P



The direction of rotation is seen from the end of motor shaft.